



Eyes *on*
Animals

Watching
out for their
welfare

ANNUAL REVIEW 2016



Charitable ANBI status: 8203 40406.



Eyes *on* Animals

CONTENTS

About Us.....	1
Letter from the Director.....	3
Our Successes.....	5
Our Finances.....	10
Our People.....	15
Introducing One of Our Inspectors.....	16
How to Donate.....	17



Eyes on Animals

ABOUT US



Our Mission;
To reduce the suffering of animals on farms, during transport, at livestock markets and at slaughterhouses.

Eyes on Animals is an animal-welfare inspection organization with its headquarters in the Netherlands. The work of the organization focuses on five main aims:

1. To witness if current European animal-protection legislation for transport, slaughter and at farms is being adhered to by the industry.
2. To oversee that the animal-protection legislation is being adequately enforced by the authorities.



Eyes on Animals

3. To judge if sanctioning systems are dissuasive.
4. To identify loopholes in the legislation and have them rectified.
5. To curb cruelty within the industry by educating industry players, giving them positive reinforcement when making improvements and spreading best practices.
6. Making the world a better place for food producers, consumers and animals.

We conduct **inspections** at farms, at livestock markets, of livestock trucks and at slaughterhouses.

We **distribute our inspection reports**, backed by photos and video evidence, to the European Commission, FVO, EU Member State and Turkish authorities to support them in their work of enforcement and inspection.

We are **in constant dialogue with the livestock industry** to advise and encourage improvements. We let the “good players” shine because positive reinforcement brings improvements fast and helps achieve an overall improvement to welfare globally, as those lagging behind eventually want to follow suit.

We **train the highway police** on animal-protection-during-transport legislation so that they can inspect livestock trucks effectively.

We give **Welfare Workshops to livestock chauffeurs**, educating them on how to be respectful and law-abiding when transporting animals. We initiate training sessions for catchers of small animals for transport (e.g. **poultry catchers**).

We **provide material to other animal-welfare organizations and political parties** that need evidence and facts from the field to support their lobby work and campaigns.

Eyes on Animals has established an **international task-force** made up of organizations and official veterinarians throughout Europe and North America. We regularly share information and work together in the field so that animal welfare standards can improve quickly and harmoniously across the continents.



Eyes on Animals

LETTER FROM THE DIRECTOR



Spreading empathy: animal-welfare workshops given to livestock truck-drivers by Eyes on Animals

A few weeks ago I was preparing a presentation that I was to give in France and was looking for a quote with which to start with that says it all. I found the following: ***Les défenseurs des animaux ne sont pas des hypersensibles larmoyants, mais au contraire, les pionniers d'une nouvelle conscience.*** (“Animal defenders are not hypersensitive whiners, but the opposite; they are the pioneers of a new consciousness”).

And today, more than ever, one can see that this is true. After years and years of the media largely refusing to report on animal suffering in the meat and dairy industry, claiming people do not want to be confronted with it or that it was of no importance compared to other “more serious” news, one can find more and more articles about this subject printed in the newspapers, on the radio and on television. Just this year Eyes on Animals and our findings were in more than 200 media sources. Now more than ever they are starting to listen, with us being asked to give talks and welfare-workshops.

Perhaps people are finally seeing the link. Just as Ghandi said many years ago: “*The greatness of a nation can be judged by the way it treats its animals*”. If the mute and poor innocents of a society are treated with dignity, then the larger group will all benefit a better quality of life. If one can teach empathy, then even the dirty, limping pigeon on a train station platform will finally actually be seen and taken care of.

Empathy is something that Eyes on Animals is spreading. And not just within our own circle of like-minded people, but also to the highway police, truck-drivers, chicken-catchers, college students, farmers and officials. We have a clear message, are determined and do not easily compromise, but we work with respect and in favour of an open dialogue and practical solutions. Knowing that via our work and our way of working and communicating, we are bringing more empathy towards animals and between people even of different backgrounds. This is what brings hope. We cannot stop the use of animals for food yet, not even via Eyes on Animals and all of its terrific people behind the organization, but we can spread



Eyes on Animals

consciousness so that empathy can grow even inside the slaughterhouses, the farms and the transport vehicles. In areas where the animals need it now the most.

A handwritten signature in cursive script, reading "Lesley Moffat".

Lesley Moffat



Eyes on Animals

OUR SUCCESSES

There is not enough room to report on all of the positive steps achieved to reduce animal suffering this year, but we have created a list of the most significant successes.

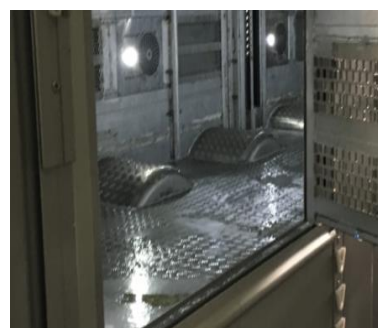
Hunland Livestock Transport, one of the largest livestock transport companies in Europe, improves truck design with Pezzaioli after meeting with Eyes on Animals

During a training course that Eyes on Animals gave to Hunland in Hungary in early 2016, we explained how the faulty design of the accessories inside livestock trucks often caused stress and suffering. We made it clear that the design needs to be adjusted and stressed that it was crucial that transport companies only buy trucks from manufacturers willing to make these changes. Hunland took this info to Pezzaioli, a major manufacturer of livestock vehicles based in Italy, and offered to buy some of their trucks should they make these important adjustments. (Eyes on Animals had also met Pezzaioli in September 2015 to encourage them to modify the design of their water troughs in their trucks and partitions). Here are the improvements now put into practice to the design:

1. No more gap between inner wall and decks or under partitions to avoid gaps where animals get trapped.



2. Grids to prevent injuries
3. More access doors to inspect and assist animals in each compartment
4. Greater number of automatic water bowls per compartment to be sure all animals can reach the water, with the water troughs also having been made larger.
5. Sides of loading ramp extra high to ensure animals do not fall off ramp.
6. Smaller wheels so there is more loading- and headspace.



Eyes on Animals

Eyes on Animals and TSB|AWF poster accepted and shown at OIE conference in Mexico



Our poster about our on-going project to decrease animal-suffering during slaughter in Turkey was accepted and presented at the International OIE conference in Mexico. Veterinarians and officials from all over the world take part in this conference.

Corlu Municipal slaughterhouse in Turkey now equipped with a stunner



Partly via our training conferences and Halal Slaughter Watch website, the Turkish scientific and veterinarian community, as well as more and more religious authorities, are understanding the advantages of stunning animals prior to slaughtering them. With correct stunning, the animal is immediately rendered unconscious and insensitive to pain and thus, when the throat is cut open to drain the blood, the animal does not have to experience the extreme fear and pain of this process.

Corlu slaughterhouse near Tekirdag now has a pneumatic stunner and offers the option to customers to have their cattle stunned prior to being bled out. Professor Tamer was the pioneer behind this educated decision. Eyes on Animals and TSB|AWF visited this slaughterhouse and saw how a large bovine was calmly moved into a restraint box, kept upright on all fours (instead of being forced to fall and then hoisted alive) and be stunned correctly.

Several improvements in the slaughterhouse of Thönes Natur

On our advice, Thönes Natur has made several improvements to their slaughterhouse, reducing the amount of suffering caused to the animals. They have installed a breast supporter underneath the poultry-shackle line. A breast supporter reduces the stress and pain caused by the shackling as it disperses the weight of the birds more evenly. It also has a calming effect on the birds. To further reduce suffering, Eyes on Animals has advised Thönes Natur to modify the breast supporter by making it longer to provide the birds with more support, to produce the breast support in a non-conducting material and to make the shackle line higher to prevent the birds from coming into contact with the crates that are stacked underneath.

Wilki poultry transport in Belgium replaced all old broken poultry-crates with better ones

Wilki not only has completely replaced all of their older crates with newer ones with top sliding doors, but also ordered 500 crates that have additional access doors on the side. Eyes on Animals promotes these so that at least the birds on the outer rows of the truck can be accessed and assisted if necessary during the journey. If Wilki is satisfied with the strength of the crates with side-access doors, they have told us that they will buy more of them.

Helmaks Slaughter Equipment in Turkey replaced production of trip-floor box with more humane upright boxes.

Helmaks, a large Turkish company that manufactures cattle-restraint boxes for slaughterhouses and sells them all over Turkey and Islamic countries around the world, was inspired to make a change after participating in our first conference. During this conference we presented a film and explained clearly why trip-floor restraint boxes, found in



slaughterhouses throughout the Islamic world and still very popular, were inhumane causing serious pain and fear. We also showed examples of more humane alternative restraint options that do not require live hoisting and create less panic in the animals than trip-floor boxes. They have just finished designing their own upright restraint box, where cattle are no longer forced to fall down nor be hoisted by one leg fully off the ground, but rather remain standing in their normal position before being killed. And now it is not just Eyes on Animals and TSB|AWF educating people in the meat industry in Islamic countries about animal-behaviour and the more humane options available, but Helmaks is doing it too. When their customers request trip-floor boxes, Helmaks encourages them to instead purchase the upright restraint boxes that do not require the painful live hoisting.

Our police training course in Poland led to fines of disrespectful livestock transport companies

Our training course that we developed and give to the road police in Poland is starting to pay off for the animals. In 2016 over 50 livestock trucks were pulled off the road to be thoroughly inspected and over 30 fines were given out. Some of the trucks we stopped and fined included cattle from Estonia on their way to Turkey (they were unloaded because there was not enough headroom), horrible poultry trucks with dead and freezing birds on board and overcrowded pig trucks. Without our training program these transport companies would still be on the road causing more suffering. We are getting the law put into practice.

Weidemark pig slaughterhouse in Germany took action to reduce heat stress in the summer

In order to reduce heat stress for animals transported during the summer we insist that slaughterhouses invest in infrastructure to handle any risks. For this reason Eyes on Animals met with the managers of Weidemark pig slaughterhouse in Sögel, Germany. Every week 70,000 pigs are slaughtered at this plant, many of the pigs coming from the Netherlands. Many livestock trucks have to wait for 2 hours and more. During this time, the temperature inside the trucks can become unacceptably high for the live pigs on board. Weidemark has now purchased industrial mobile fans to set up along the parked livestock trucks.



Eyes on Animals

Meyn poultry-transport containers now with access doors

Meyn, a huge international company that manufactures poultry transport containers, improved the design of their containers so that there are no access doors. In 2012 we released our big report called “Cracks in the Crate” and our film covering the main problems in the design of transport crates and containers for poultry. Normally the birds are prisoners during transport; it was impossible to assist those that were injured or stuck on their backs. It was also impossible to humanely euthanize those that were suffering badly. In 2014 the Coevorden company developed a new transport crate with side-doors for laying hens and that Meyn now has for broilers based on our criticisms.



Improvements at Gönen slaughterhouse, Turkey

We visited this plant for the first time in 2013. We observed cattle falling down and being electric prodded and having their tails twisted, in order to force them forward. The floors were slippery and the design of the raceway was such that the animals could see inside the slaughterhouse making them very scared to move forward. This led to the workers becoming frustrated and mistreating the animals. We sent them our report and gave them advice on what steps could be taken to reduce the suffering and stress for the animals at their plant. In early 2015 they informed us that they had started with construction. In January 2016 we returned to see for ourselves the improvements. Indeed, the plant built a roof above the entire lairage and raceway to protect the animals from adverse weather and block the creation of shadows and puddles on the floor, which distract and cause fear in animals. Plus, they changed the sides of the raceway, making it now solid with curves to hide the view up ahead and distractions to the side. As a consequence the workers no longer feel the need to use painful tactics to force the animals ahead.



Rondeel to switch to a more ethical method of chicken-catching

In 2016 Eyes on Animals introduced the gentler Swedish method to the Netherlands' poultry industry and is now promoting it to be adopted in practice. During the Swedish Method, birds are not grabbed roughly by their legs and hung upside down, 3 per hand and then stuffed headfirst into transport crates as in the conventional method. They are rather picked up maximum two at a time, in an upright position with support under their chest and then placed upright and calmly into the transport crates. The birds suffer a lot less stress and pain this way.

We trained 3 chicken-catching companies: Gemril, van den Broek en Den Ouden. The training is divided into a theoretical and practical part.



Eyes on Animals

We met with the General Manager of Rondeel, a company that runs four chicken-farms in The Netherlands and produces eggs and poultry-meat according to higher welfare standards, to encourage Rondeel to adopt a better catching method into their policy. They agreed and Rondeel is now changing to the more humane method of catching and loading poultry.



Slaughterhouses in the Netherlands.

The newly built pig slaughterhouse Westfort in IJsselstein took our recommendations into their design plans. The lairage is very large so pigs brought to the slaughterhouse can be unloaded immediately and do not have to wait outside in the truck, which is especially good when the weather conditions are very hot, as leaving animals waiting on board stationary trucks leads to major welfare problems. In addition, the lairage also has floor heating for the winter time. The gates and dividers in the lairage and the loading area are partially made of plastic instead of steel, so sudden loud noises – which easily scare the pigs – are no longer created.

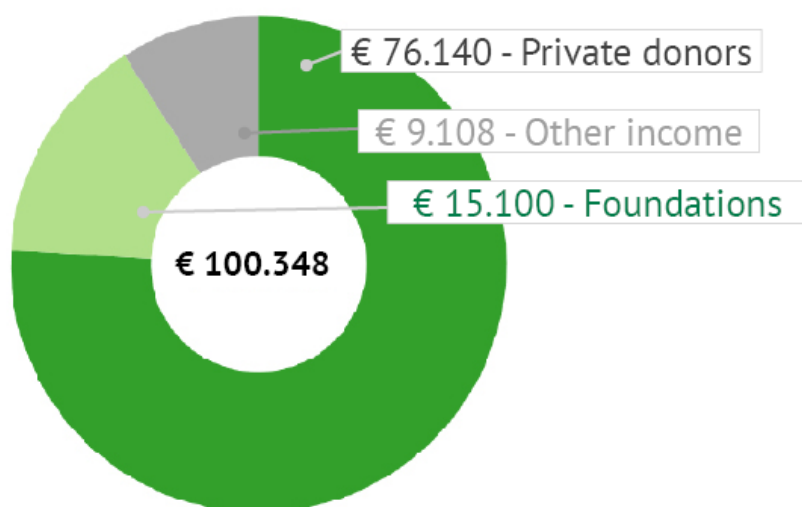


Eyes on Animals

OUR FINANCES

INCOME

In 2016 Eyes on Animals' total annual income was €100,348; 3% more than was received in 2015. Eyes on Animals is funded primarily by dedicated private donors and committed animal welfare foundations.



75% of Eyes on Animals' income in 2016 came from a loyal and growing group of private donors who have enabled us to expand our fieldwork activities and train our volunteers for the challenges of working in animal welfare.

In 2016 we were fortunate to enjoy continued and generous support from:

- Stichting DIER NL
- Wakker Dier
- Fonds Carlos Artsens
- Stichting Dier in Nood
- Stichting Anti Dierenleed

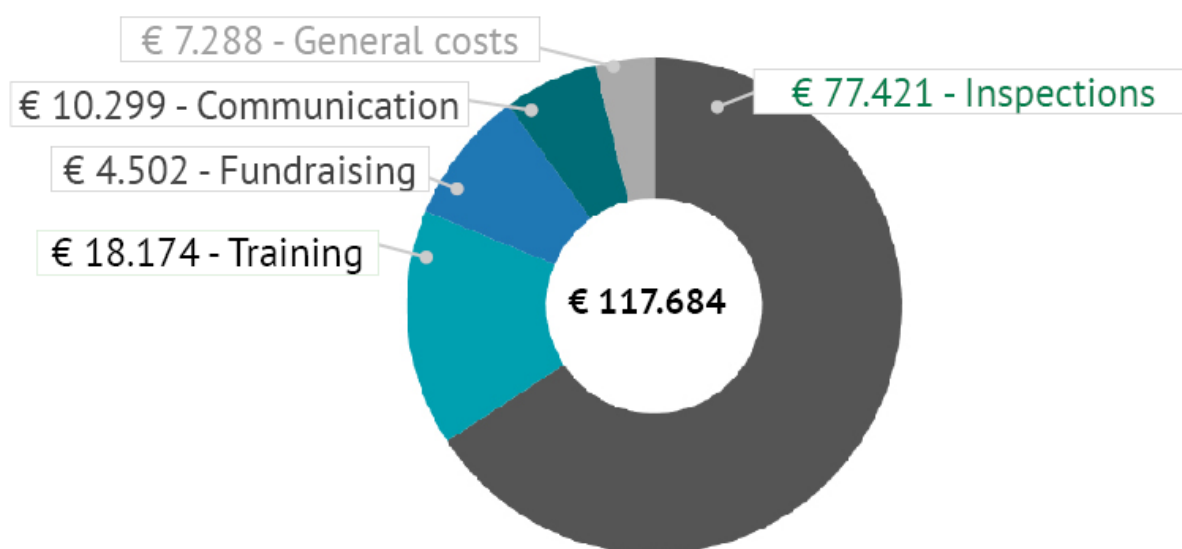
In 2016 Eyes on Animals shared costs for some inspections and training sessions with partner organizations Tierschutzbund Zurich | Animal Welfare Foundation and the Dierenbescherming.



Eyes on Animals

EXPENDITURES

The increased number of inspections and training sessions in the field has led to an increase in expenditures. The total annual expenditure for 2016 was € 117,648 - a rise of 11% compared to 2015. Careful financial budgeting, planning and management in 2016 has allowed Eyes on Animals to focus on its primary objective of fieldwork and inspections. We try to keep our overhead cost to an absolute minimum so we can allocate funds our donors entrust us with directly to animal welfare.



Inspection Costs cover all expenditures of sending teams into the field within The Netherlands and Europe, but also Turkey and beyond.

Training Costs incorporate expenses incurred in the training of the Highway Police in various Eastern European countries as well as giving talks and workshops at training courses for the Dutch NVWA authorities.

Fundraising Costs cover fundraising efforts varying from sending postcards to paying freelancers to apply for funds from foundations. The production of our various newsletters and parts of our website are also earmarked as fundraising.

Communication Costs cover costs for our outreach, for example via social media; our homepage and newsletters.

General Costs cover administration and development costs. These include all office costs, investment in fixed assets such as cameras and laptops, EonA uniforms, navigation systems, cell phones, IT maintenance and development of an improved website.

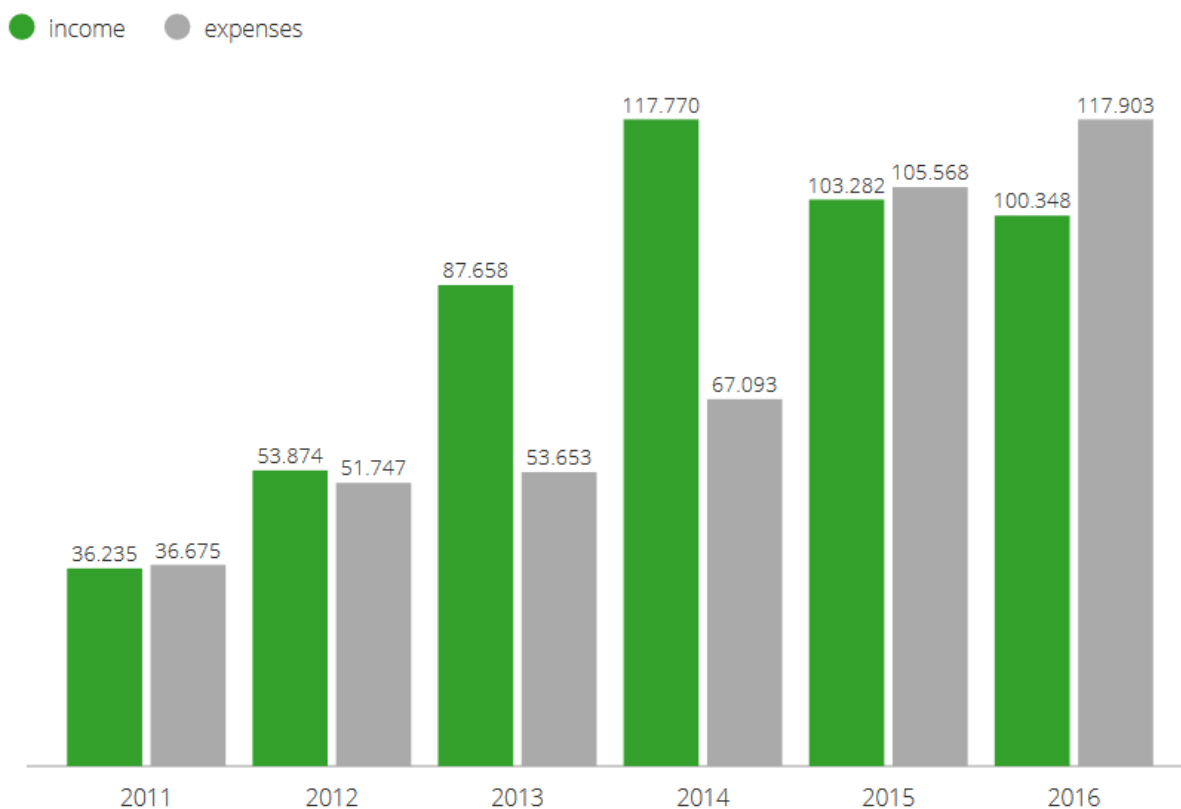


Eyes on Animals

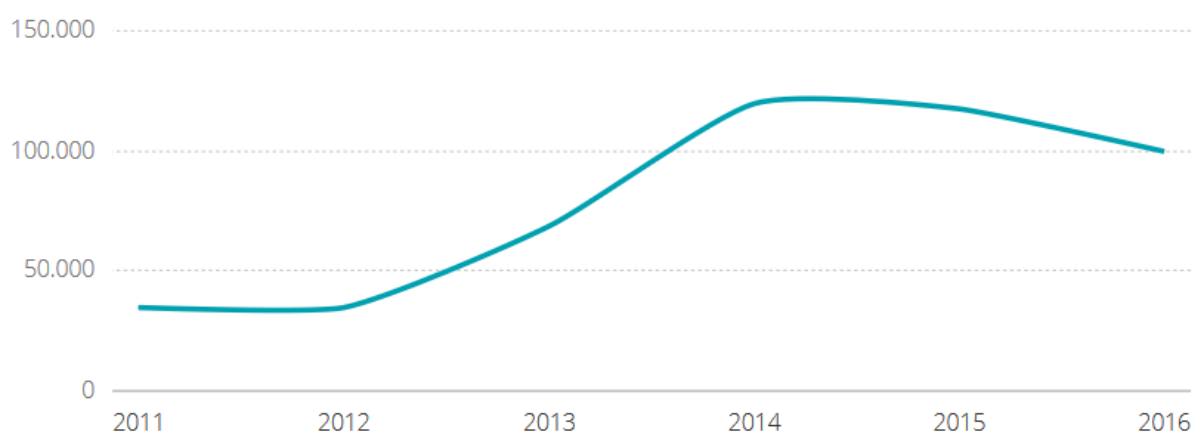
TRENDS IN INCOME AND EXPENSES

The activities of Eyes on Animals have expanded dramatically in the last years; hence the increase in expenditures but also increase in income. Eyes on Animals will keep focusing in generating enough income to be able to retain its sustainable growth.

Income and expenses 2011-2016 (€):



General reserve (€):



Eyes on Animals

BALANCE AS OF 31 DECEMBER 2016

	31-12-2016	31-12-2015
Activa		
<u>Fixed Assets</u>		
Inventaris	194	413
<u>Current Assets</u>		
Receivables	6.657	4.529
Cash and Bank	96.765	115.196
	<u>103.423</u>	<u>119.725</u>
	103.617	120.138
Passiva		
<u>Equity</u>		
Equity	117.328	119.614
Income less expenses	-17.555	-2.286
	<u>99.773</u>	<u>117.328</u>
<u>Current Liabilities</u>	<u>3.845</u>	<u>2.810</u>
	103.617	120.138



STATEMENT OF INCOME AND EXPENSES 2016

	Budget 2017	Realisation 2016	Budget 2016	Realisation 2015
Income				
Foundations	25.000	15.100	45.000	25.360
Donations	91.200	76.140	55.000	75.266
Sales	6.000	8.726	4.500	1.950
Interest	250	382	500	707
Other income	-	0	5.000	-
Total income	122.450	100.348	110.000	103.282
Expenses				
Inspections	81.000	77.421	84.000	66.077
Training	19.000	18.174	16.000	11.605
Fundraising	5.000	4.502	12.000	11.246
Communication	9.500	10.299		
Administration and general	7.500	7.288	10.800	16.421
	122.000	117.684	122.800	105.349
Inventory write	219	219	219	219
Total expenses	122.219	117.903	123.019	105.568
Income less expenses	231	17.555-	13.019-	2.286-



OUR PEOPLE

Eyes on Animals is overseen by an independent Board consisting of five members. The director together with volunteer/freelance inspectors, legal-advisor, computer-technicians and media and fundraising committees runs the organization.

Board:

Chairwoman: Suzanne Brussard (journalist)

Secretary: Annette Zeelenberg (author)

Treasurer: Jane Barrett (teacher)

General member: Patricia Beekelaar (journalist)

Volunteer and freelance staff:

Director and founder: Lesley Moffat

Core inspectors/trainers: Madelaine Looije, Lesley Moffat, Monique Slee, Margreet Steendijk, Asalet Sancakdaroglu, Dr. Berker Bademli and Dr. Ellen Eser (Turkey), Levente Pencz (Hungary), Margret Wenker (dairy-cattle welfare), Ingrid Ramaan (horse-inspections).

Volunteers: Marta Burzynsk, Didier Cote, Anita Hess, Yvonne Kroonenberg, Renee Lamoureux, Alina Lilova, Sanja Offenhuber, Catherine Sitsen, Annemarieke de Wind, Roland Zegers, Nigel Franks

Legal advisor: Lenny Reesink

Technical assistants: Hajo Heusinkveld, Jack Tummers

Fundraising committee: Suzanne Brussard, Lesley Moffat , Annette Zeelenberg

Media committee: Suzanne Brussard, Lesley Moffat

Website managers: Sanja Offenhuber, Jack Tummers

Social media: Remy Gardien, Margreet Steendijk



Eyes on Animals

INTRODUCING ONE OF OUR INSPECTORS



Inspector – Margret Wenker

Even as a young girl I had great compassion towards animals. They fascinated me and I worried about their well-being. This concern grew as I got older. That is why I started a Bachelors in Animal Science at the University of Wageningen in 2010 followed by a Masters in the same field. During my studies I became more and more motivated to do something practical to decrease animal suffering and to spread ideas for improvements. To expand my knowledge in animal behaviour and welfare, I also went to Sweden in order to take some courses at the university there. When I returned to the Netherlands in 2014 I contacted Eyes on Animals to inquire about the fate of farm animals after they leave the farm. At the universities nobody spoke about that aspect of their life, so I knew nothing about it and had absolutely no experience in the field. I joined Eyes on Animals while they were doing their inspection visits of livestock markets, trucks and slaughterhouses and felt immediately at home in the group. By doing voluntary work for Eyes on Animals I can at last do something constructive to diminish the suffering of farm animals by speaking on their behalf, by sharing my knowledge and listening to what other people involved have to say. Nowadays I go on inspections for Eyes on Animals and I share as much of my knowledge as I possibly can by organizing conferences and giving talks at agricultural schools.



Eyes on Animals

PLEASE DONATE

We could not do any of this work without your financial support. Please do consider making a donation and telling your friends about us. The animals need more eyes on them, reporting on their welfare and helping alleviate their suffering.

Our bank account number:

21.23.64.219

IBAN: NL73TRIO0212364219

BIC: TRIONL2U

Our bank:

TRIODOS BANK

PO BOX 55

3700AB ZEIST

The Netherlands

Eyes on Animals is a registered non-profit charity, approved with the KGB label. Our ANBI (Algemeen Nut Beogende Instelling) number is 8203 40406.

Donations made by EU residents are tax-deductible. Donations made by residents outside of Europe can donate via credit card or PayPal over our website to avoid international bank fees.

Our postal address:

Eyes on Animals

PO Box 59504

1040LA Amsterdam

The Netherlands

Our social-media addresses:www.eyesonanimals.com

Twitter: @Eyes_on_Animals

Facebook: eyesonanimals

Youtube: eyesonanimalsinspect



Eyes on Animals